

Ccore Compact HPL

Compact strength, versatile design opportunities

The Collection

The Ccore Collection of Compact High-Pressure Laminate (HPL), also known as SGL (Solid Grade Laminate), is a solid, self-supporting decorative panel.

Made from multiple layers of kraft paper, impregnated with thermosetting resins, compressed under high heat and pressure to create a virtually indestructible board.

Engineered to deliver exceptional quality, robust durability, and design versatility for demanding environments. Ccore Compact HPL panels are built to last.

From indoor elegance to outdoor resilience.

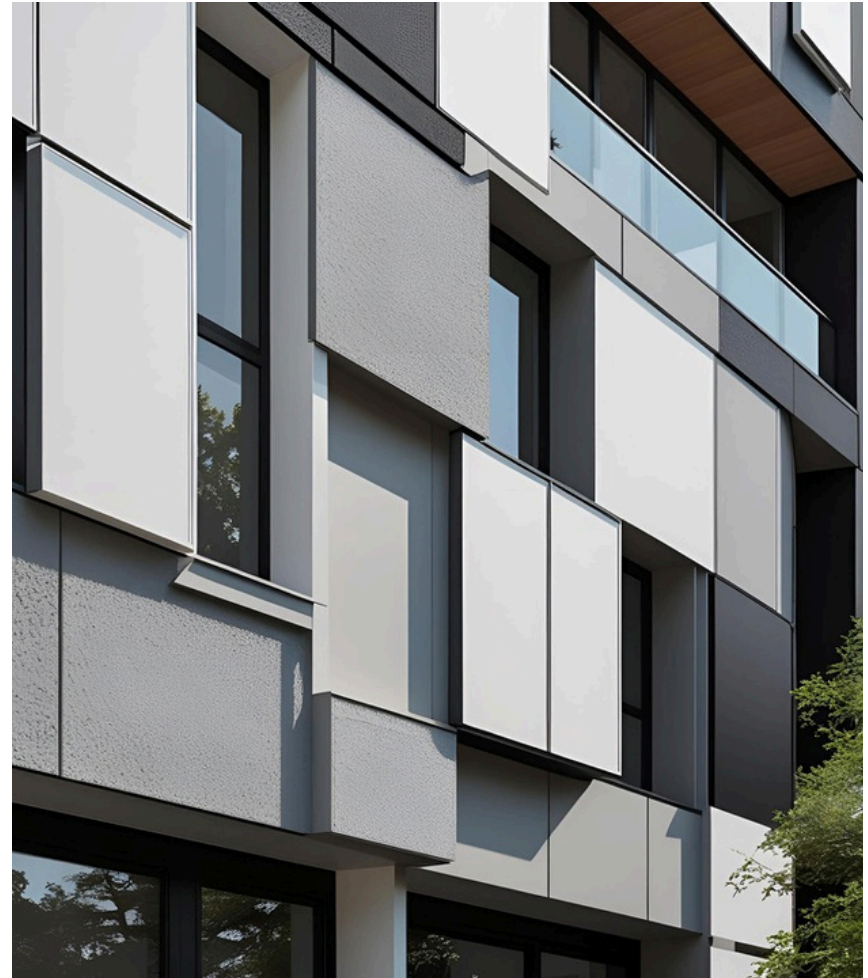


Ccore Compact HPL

Compact strength, versatile design opportunities

Key Advantages

- Impact & Scratch Resistant – Designed for long-term use in demanding environments
- Waterproof – Non-porous surface resists moisture
- Hygienic – Resists bacteria build-up and is easy to clean
- UV & Weather Resistant – Suitable for indoor and exterior applications
- Fire-Rated Standard Board – Enhanced safety B-s1,d0 (Euroclass)
- Design Flexibility – Choose from curated finishes or fully custom imagery
- Sustainably Composed – Up to 70% natural material content
- Applications – Lightweight, easy to fabricate , handle and install using standard fixing systems



Uses & Applications

Outdoor or Indoor, endless possibilities

Commercial Washrooms



Public Library — Solid Colour Facade Cladding



Healthcare — Panelling



Ccore Compact HPL

Compact strength, versatile design opportunities

Size, Thickness & Finish

Standard Panel Sizes: 1220mm x 2440mm,
1530mm x 3050mm

Thicknesses: 4mm to 12mm

Grade: **1** Interior **2** Exterior
2 Fire-Rated **4** Bio-Chemical

Surface finish: Texture, Matt, Gloss, Wood Grain,
Stone, Rock (3d Surface) & Others

Colours: Over 200 different colour options to
include: Solid colours, Wood grains,
Stone, Marble, Terrazzo, Concrete &
Metal-effect

Additional sheet sizes, thicknesses (3mm - 25mm) and
finishes are available upon request



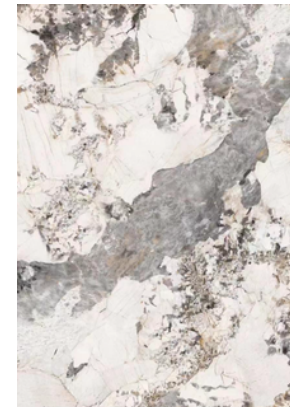
Wood Grain



Solid Colour



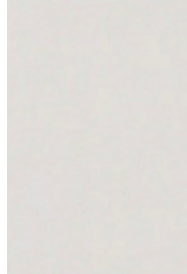
Concrete



Marble

Solid Colours

Wellness Club — Changing Rooms, Lockers & Partitions



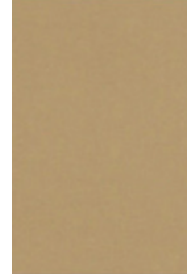
CGHPL-A212042

1 2



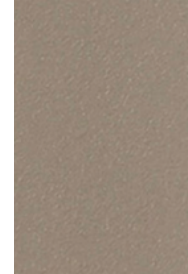
CGHPL-E110925

1 2



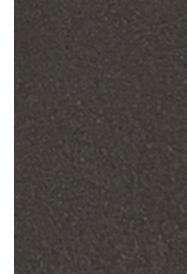
CGHPL-E110903

1 2



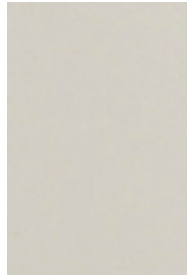
CGHPL-E117913

1 2



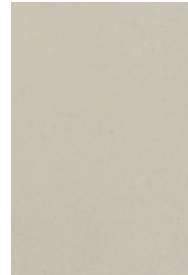
CGHPL-E112200

1 2



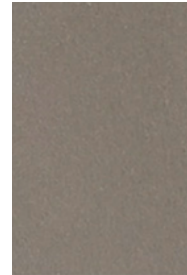
CGHPL-E110858

1 2



CGHPL-E110958

1 2



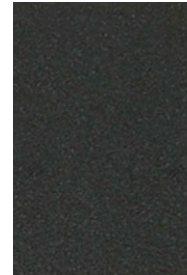
CGHPL-E115342

1 2



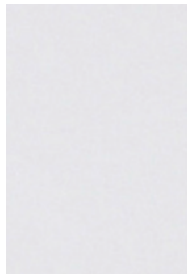
CGHPL-E111834

1 2 4



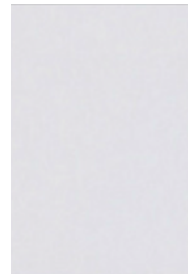
CGHPL-E110837

1 2 4



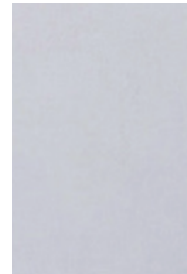
CGHPL-E110949

1 2



CGHPL-C11049

1 2



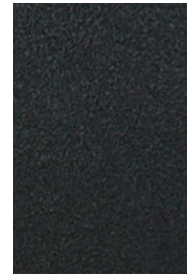
CGHPL-E117938

1 2



CGHPL-E110929

1 2

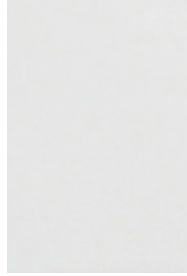


CGHPL-A212001

1 4

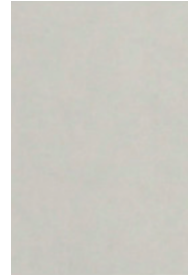


Solid Colours



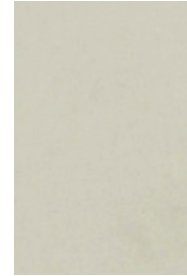
CGHPL-A313200

1 3



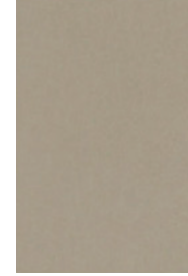
CGHPL-A212062

1 3 4



CGHPL-A212041

1 3 4



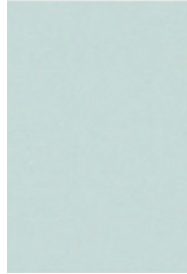
CGHPL-A212039

1 3 4



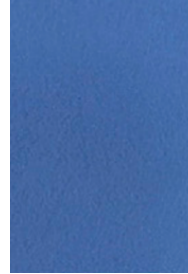
CGHPL-A212006

1 3 4



CGHPL-A212152

1 3 4



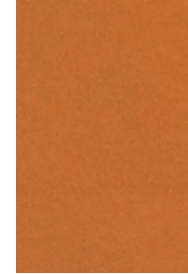
CGHPL-A212017

1 3 4



CGHPL-A212060

1 3 4



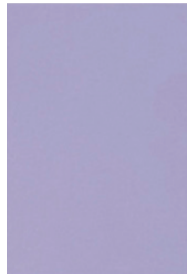
CGHPL-A212036

1 3 4



CGHPL-A212038

1 3 4



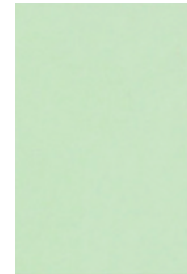
CGHPL-A212173

1 3



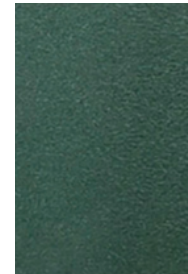
CGHPL-A212014

1 3



CGHPL-A212055

1 3



CGHPL-A212147

1

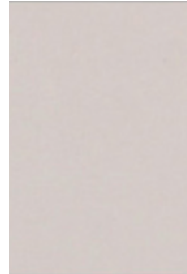


CGHPL-A212028

1 3

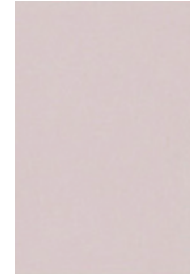


Solid Colours



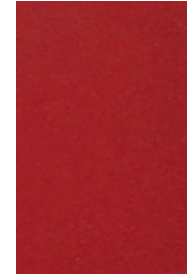
CGHPL-A212040

1



CGHPL-E215491

1



CGHPL-A212033

1 4



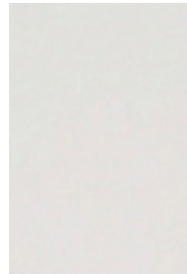
CGHPL-A212066

1



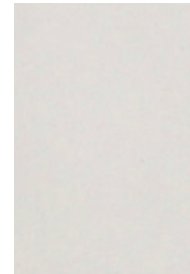
CGHPL-A212053

1



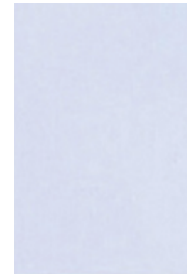
CGHPL-E110934

1 2



CGHPL-A311534

1 2



CGHPL-E110231

1 2



CGHPL-A212011

1 4



CGHPL-A212183

1 4



CGHPL-O17341

2



CGHPL-O17378

2



CGHPL-O17351

2



CGHPL-O17291

2



CGHPL-O17369

2

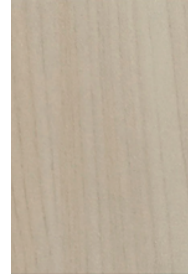


Wood Grains



CGHPL-A222941

1



CGHPL-A222899

1 3



CGHPL-E226213

1



CGHPL-E228860

1 3



CGHPL-A222511

1



CGHPL-E225485

1 2



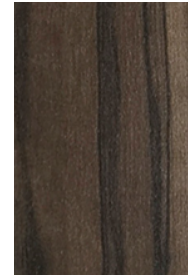
CGHPL-E229966

1 3



CGHPL-A222551

1



CGHPL-A222559

1



CGHPL-E226437

1



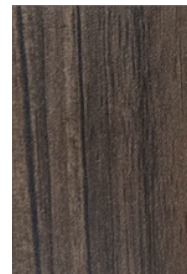
CGHPL-222939

1



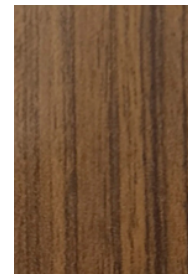
CGHPL-C224178

1 2 3



CGHPL-222888

1



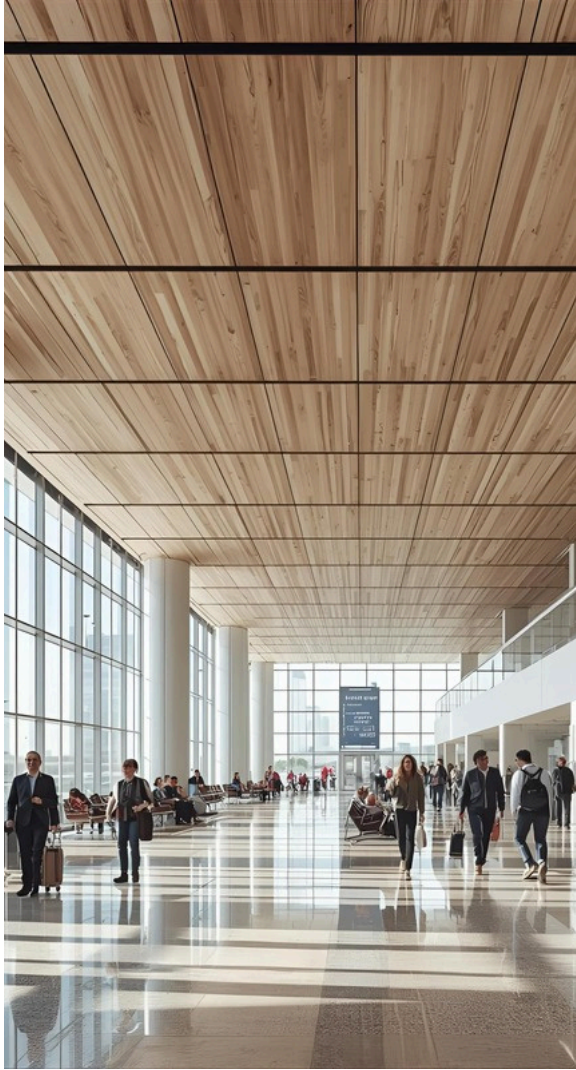
CGHPL-E229398

1



CGHPL-A222872

1



Wood Grains



CGHPL-S221281

1 2



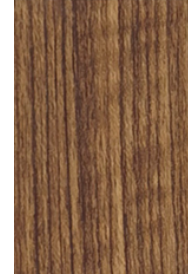
CGHPL-A222929

1



CGHPL-A222951

1 2



CGHPL-C227209

1



CGHPL-E220869

1 2



CGHPL-E228914

1 2



CGHPL-E228853

1



CGHPL-E227672

1 2



CGHPL-E225150

1 3



CGHPL-E221395

1 3



CGHPL-E228915

1 2



CGHPL-E229392

1



CGHPL-E229439

1 2



CGHPL-S221272

1 2 3

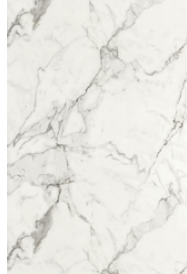


CGHPL-E228006

1 2

Stones & Concrete

Hospitality — Commercial Furniture



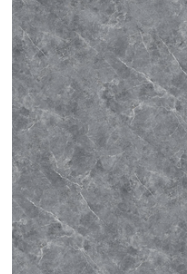
CGHPL-E233460

1 2



CGHPL-A236851

1 2



CGHPL-A235916

1 2



CGHPL-A236594

1 2



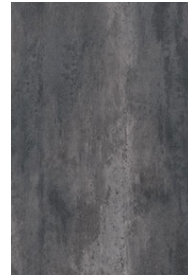
CGHPL-A231840

1 2



CGHPL-A233153

1 2



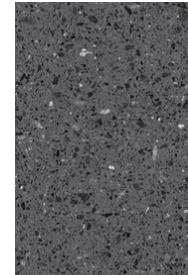
CGHPL-A233074

1 2



CGHPL-A233141

1 2



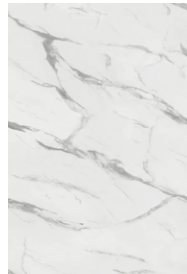
CGHPL-A236862

1 2



CGHPL-A231961

1 2



CGHPL-A236311

1 2



CGHPL-A235581

1 2



CGHPL-A232954

1 2



CGHPL-A236591

1 2



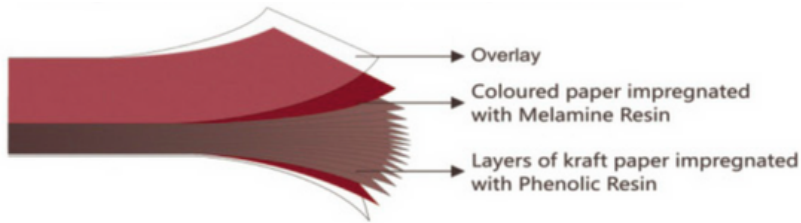
CGHPL-A232955

1 2

Technical Data

Compact HPL Product Information

Structure



- Overlay Scratch-resistant (interior Grade) & UV protection film (Exterior Grade), Chemical-resistant film (Bio labs Grade)
- Decorative layer - Coloured paper impregnated with melamine resin
- Core - Compressed layers of kraft paper impregnated with phenolic resin



Antibacterial Properties



Acoustic Properties



Food safe



Quality Guaranteed



Excellent Light Fastness



Environmentally friendly



Low VOC emissions



Robust Impact Resistant



Waterproof & moisture proof



Scratch resistance



Non-corrosive



Resistant to termites



Anti-graffiti properties



Non combustable

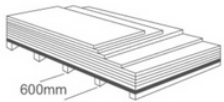
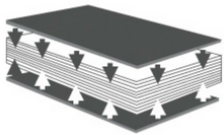


Resistant to chemicals

Handling & Storage

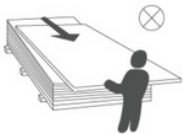
Recommendations

Storage



- Compact HPL must be stacked and stored on a flat, firm, and stable surface. During storage and transport, the compact HPL must be placed on a plate whose size is slightly larger than the boards. A plate should be placed between the pallet and the boards, and a cover plate should be placed above the boards.
- Compact HPL must not be stored in areas where the temperature fluctuates.
- Compact HPL must not be stored in a wet or hot environment.
- Compact HPL must be placed left to balance for at least 72 hours after shipment and before being processed or installed, to allow the sheet to balance to the environmental conditions on location. Ideal conditions: Temperature: 18-22°C. Air humidity: 50-60%.

Handling



- Compact HPL must be lifted vertically to avoid scratching.
- Move a full pallet with a forklift.
- A single sheet must be lifted and moved by at least two or more people
- It is recommended to use the vacuum chuck to lift the boards.
- Caution must be exercised during the moving and transport of Compact HPL sheets to avoid damaging them. Special care should be given to the corners and edges.
- You must not drag sheets on their surface.

Fabrication

Recommendations

Process



Decorative Cut



Sawing



Drilling



Riveting



Screwing



Screen Printing



Digital Printing



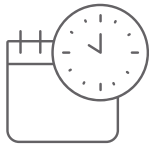
Glueing

- Processing must be performed on a stable, flat, even surface.
- Compact HPL could be drilled, routed, tapped, sanded, shaped and cut with standard carbide-tipped tools.
- Compact HPL sheets must be cut at a slow speed to avoid damage to the decorative layers and board.
- Machining - To get a good finish, engrave a least 2 mm but not more than 5 mm of material. The use of diamond-tipped tools could enhance the finished realisation.
- Compact HPL sheets can be joined together and connected using routed tongue and groove (min 3m) or routed to take a glued biscuit joint.
- Sheets can also be grooved to allow concealed fixings to the substructure frame.
- Sheets can be connected or fixed to substrate backing using adhesive bonding.
- Sheets can also be fitted using continuous profiles.
- Doors made of Compact HPL sheets (e.g. furniture) can be installed with two piano hinges. Large doors for sanitary cells and changing rooms must be attached to more than two hinges.
- Expansion joints and flexibility are recommended on certain applications where movement is predicted.

Maintenance & Cleaning

Recommendations

Cleaning



- Compact HPL sheets require no special care.
- Compact HPL must be washed and cleaned using a soft, clean cloth and simple, mild detergent, rinsed well with water and dried. Cleaner or Isopropyl Alcohol can be used to wipe clean if a stubborn stain persists.
- Cleaning agents commonly used in households perform well in contact with the laminate if they have no wear properties and do not contain acids or strong alkaline substances.
- Ink, glue or varnish stains must be removed with solvents like alcohol or acetone.
- Compact HPL is resistant to most stain-causing substances, e.g. milk, tea, coffee, wine, and syrups.
- Despite Compact HPL's high resistance to staining, it is recommended to remove the remains of all aforementioned products from the surface promptly. Particular attention must be paid to products such as blueberry juice, beetroot juice, or tomato puree.